

International Student Welcome Guide 2021/2022

Paris Campus

 early makers
since 1872



em
lyon
business
school



Table of contents

Paris campus	3
A brief word from our president.....	3
History of the school.....	3
Campus presentation.....	3
Campus services.....	3
Campus access.....	4
Immigration	5
First step: the visa.....	5
Pre-Departure Checklist.....	5
Validate your visa after arriving in France.....	5
Renew your visa or residence permit.....	5
Housing in Paris	5
Living costs.....	5
Tips to Find Housing.....	5
How to Find a guarantor.....	5
Types of Housing.....	6
Signing the lease.....	6
Housing Insurance.....	6
Housing Benefits (CAF).....	6
Health and Insurance	7
The Health Insurance System.....	7
Complementary health insurance.....	7
Declaring a general doctor.....	7
The “Carte Vitale”	7
Emergency numbers.....	7
Doctolib.....	7
International Insurance.....	7
Third party liability insurance.....	7
Life in France	8
Banks and loans.....	8
Transportation.....	8
Phone & Internet providers.....	8
Campus administration	8
Administrative Registration (IAEL).....	8
Student Card.....	8
WIFI.....	8
Good deals	9
Culture.....	9
French cuisine and restaurants.....	9
World cuisine and neighbourhoods.....	9
Solidary grocery stores.....	9
Paris and its “marchés”	9
Your main contacts	10

A brief word from our President

Dear International Students,
Welcome to **emlyon** business school !

Triple accredited, emlyon is one of the best high-ranked institution !

You have decided to join **emlyon** business school as part of your studies abroad and I would like to congratulate you on joining us.

The Faculty and Administrative teams are deeply committed to offer you not only a unique high-quality educational experience but also a rich, stimulating and challenging new stage of your life.

This information pack, will be your guide for months ahead and help you to integrate and complete the required procedures. In addition, The Student Services Center will be there to support you throughout your stay.

I am convinced that your experience with us will be determinant, full of success and fulfillment.

I thank you for your trust and wish you the best for your studies and your stay in France !

Prof. Isabelle Huault
Executive President & Dean



History of the school:

- 1872 The "Ecole Supérieure de Commerce de Lyon" opens its doors with 75 students and 17 professors.
- 1972 For its 100th anniversary, the school moves to a new campus in Ecully.
- 1997 ESC Lyon celebrates its 125th anniversary and becomes E.M.LYON (Ecole de Management de Lyon).
- 2007 Opening of a new campus in Shanghai
- 2014 Opening of a new campus in Saint-Etienne and launch of the Bachelor program
- 2015 Opening of new campuses in Casablanca and in Paris
- 2022 Opening of a new campus of 30,000 sqm2 in the district of Gerland in central Lyon

"I wake up early.
I capture a thousand ideas, shake and share them,
focus and turn good ones into opportunities.
I move forward to make it happen, try, fail, do it
again,
make it work and improve it with the help of
others.
I am a maker. I am an **early maker.**"

Paris Campus

Campus presentation

Studying on an **emlyon** business school campus is a life experience filled with innovation. All campuses have a number of innovative tools for learning, exchanging and creating. An ultra-connected and innovative site, the Paris campus is located in the heart of Paris, next to "Gare de Lyon" train station. You can enjoy a [virtual tour of our Paris campus](#).

Campus services

Creativity & Learning Hub

The Learning Hub is a new-generation third-place library and a "phygital" (physical and digital) space available on all school campuses.

The **physical Learning Hub** (*located on Level 2*) is a place for meetings, exchanges and collaboration. It has been designed to provide spaces for work, relaxation and eating, whether alone or with others, enabling everyone to find a place that meets their own needs in a spirit of mutual respect.

The **digital Learning Hub** creates and develops a constantly evolving digital information environment. Available 365/24/7 worldwide, it promotes learning, research and innovation within the school.

More information on the learning Hub on your student [Makersboard](#).

Makers' Lab

emlyon business school makers' labs are prototyping workshops that are unique among French business schools. Dedicated to creativity and learning by doing, they are open to the entire emlyon ecosystem, whether graduates, students, staff, professors, researchers, incubators or partner companies. You can use your Makers' Lab (*located on Level 3*) to prototype your ideas in record time thanks to the resources provided, including machines, materials, electronic components, software and a team of facilitators.

More information on the Makers' Lab on your student [Makersboard](#)

Food & Restauration

The cafeteria: Located on the ground floor "Espace 48.2", the cafeteria provides breakfast and a variety of snacks that you can buy with your credit card, by cash or with your **emlyon** student card.

Melchior's "Frigo connecté" Smart-Fridge : Located on the ground floor "Espace 48.2", you can have access all day to fresh meals in this fridge. 5 different recipes/week will be available. 90% of the containers are made of glass, collected after use for cleaning and re-using.

You will find more information about food & restauration on your Student [Makersboard](#).

"La Conciergerie" concierge service

Located by the front desk, it offers a variety of services.

Makersboard

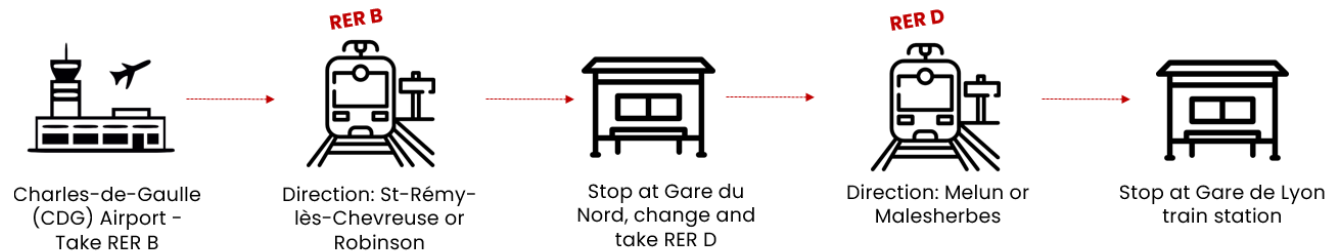
The [Makersboard online platform](#) will provide you with valuable information to help you finalize your enrolment at emlyon business school. Makersboard will be your number one guide until you arrive on campus!

Campus access

From Charles-de-Gaulle (CDG) Airport to Paris Gare de Lyon station by train, bus, or taxi

Option 1: RER B and RER D

The whole trip takes about 1 hour and costs an **RATP** train ticket (around 10.30€). You can buy bus tickets via ticket machines by credit card or cash. More info [here](#).



Option 2: RoissyBus

The whole trip takes about 60 minutes. The **RoissyBus** ticket costs (around 13.70€) and you will also need to purchase an **RATP** metro ticket (1.90€) for the second part of the journey. More info about the bus [here](#).



Option 3: Taxi

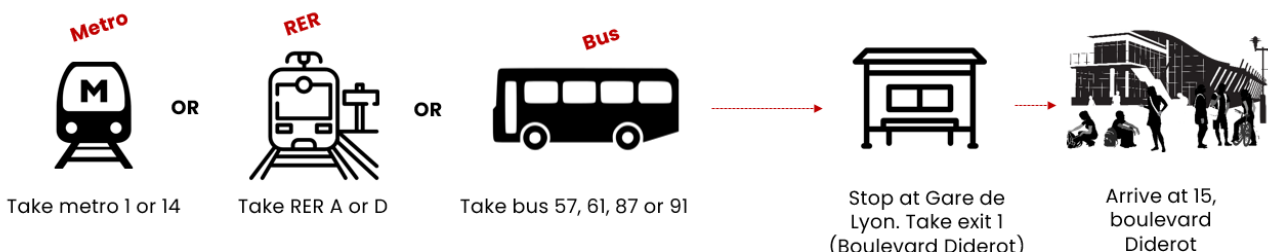
There are taxis available at the airport. Make sure to take an official taxi, it will have an illuminated sign on top of the car. From the CDG airport to the city of Paris, it will cost a flat rate of 53€ or 58€. For other a destination in the suburbs, it will cost between 20€ and 90€. More info [here](#).

Accessing the emlyon business school Paris campus

Ways to reach campus

Centrally located right next to the **Gare de Lyon** train station, the Paris campus is easily accessible with **metro lines 1 and 14** and the **RER train lines A and D**. Located a short walk from Gare d'Austerlitz, the campus is also accessible via metro lines 5 and 10, in addition to RER C. In addition to being highly walkable, the city's transport network includes many bus lines and a growing shared biking system.

You can plan your itinerary to come to **emlyon** business school from anywhere in Paris directly on the [RATP](#) page.



Immigration

First step: the visa

If you are a national from the European Union, the EEA, or Switzerland, you do not need to apply for a student visa.

Do you need a student visa for your stay in France? Check [here](#).

If you need a visa, please check if you are concerned by the pre-consular "Etudes en France" procedure [here](#). Find out more information about the pre-consular procedure "Etudes en France" on your [Makersboard](#), on the section "VISA application."

If you are not concerned by the "Etudes en France" pre-consular procedure, you will certainly need to apply directly through the French consulate. Check [here](#) how you will have to apply.

Please note that in any case, you must first be accepted to **emlyon** in order to apply for a visa. You will need to apply at least **3 months** before your estimated arrival in France.

Pre-Departure Checklist

- **Passport (or ID cards for EU citizens)** and a scanned copy for safe-keeping
- **An original birth certificate (in the original language).** This document is very important for administrative procedures in France. French administrative bodies prefer to see the original and make a copy themselves. As always, keep a scanned copy! You will have to translate your birth certificate in France by a [certified translator](#).
- **European health insurance card (for EU citizens only)** valid for at least the full academic year (September 1st to August 31st).
- **Extra passport photos:** taken under the same regulations as for the European passport
- **Important medical record,** especially vaccination records
- **Contact details** from home in case of an emergency.
- **Some cash for your arrival,** since your credit card might not work in France. Please be careful and do not carry large amounts of cash.
- **A plug adaptor** if necessary. In France we use E type plugs with a 230V tension a 50Hz frequency.

Validate your visa after arriving in France

If you **have a D-type Long stay Visa** (CESEDA R311-3-6), you must validate your visa through [this website](#). Log in and follow the instructions.

The validation of your visa is mandatory and must be done **within the first 3 months after your arrival** in France.

A step by step tutorial is available on your student [Makersboard](#) in the section "Validate your visa."

If you are a national from the European Union, the EEA, or Switzerland, you do not need to apply for a student visa.

Renew your visa or residence permit

If you are a non-EU student already in France, you may need to renew your visa or residence permit **3 months before the expiration date**.

The procedure is entirely online, and the International Student Support team will pre-check your documents.

Please contact us directly.

- Paris : internationaloffice75@em-lyon.com
- Ecully : internationaloffice@em-lyon.com
- Saint-Etienne : internationaloffice42@em-lyon.com

Housing in Paris

Known internationally as one of the top luxury capitals in the world, Paris is also the cornerstone of culture, literature, arts and design. It has famous monuments, art exhibits, dance shows or music festivals, and world-renowned museums.

With 12 million inhabitants, France's capital city is home to almost 19% of the country's total population. It is also the country's center of economic activity and accounts for about thirty percent of the French GDP. Paris is home to many international companies in the fields of media, entertainment, telecommunication, transportation and energy, and is located two hours from Lyon by train (TGV).

Living costs

Monthly budget: around € 1300-1500.

- Rent: €800-1000
- Transportation: €38 for under 26 y.o. €75 regular price.
- Food: €200-300
- Books, photocopies: €40
- Miscellaneous (insurances, taxes, clothing): €100
- Mobile Phone: plans starting at €2 (depends on provider)
- Entertainment: €100-200

Please note that this is a tentative budget which depends on your choice of accommodation and lifestyle.

Tips to find student housing

It is not easy to find accommodation, especially in large French cities, so make sure to start your search as soon as possible.

✗ **Don't wait** until you are in France to start looking for housing

- ✓ Submit your application **before you leave**
- ✓ Send in **several requests** for student housing
- ✓ Try to find student rental accommodation that is **furnished**

⚠ Be careful and make sure the company offering the lodging is reliable. **Never send money without first signing a lease** and speaking directly with the company.

How to find a guarantor

When you rent an apartment in France, a guarantor is almost always required, since they guarantee to pay your rent if you are unable to do so. **Your guarantor must be French or living in France.** If you do not have a French guarantor, here are some of the other options:

- **Garantme:** Are you about to move to Ecully, Lyon or Paris? Garantme is pleased to help you to find your accommodation by being your guarantor. **Good news!** With the housing partners of Garantme, 1 out of 2 certified students find their future housing within 7 days thanks to apartment searching platform - Garantme Search. This platform is 100 % free, 0 hidden second-hand fees. [Click here](#) to apply right now! Benefit from a special discount by using the **promo code: EMLYON**
- **SmartGarant:** Founded by two former **emlyon** students, they also offer a service of rent guarantee for students who have difficulties dealing with owners' criteria. Boost your housing file with them, reassure your future owner, increase your chances of getting housing, get your free certificate in less than 24H and get your rents covered for the duration of the lease! Benefit from a special discount by using the **promo code: EMLYON**. Smartgarant has also opened a new service: SmartAlerte. This tool allows you to automatize your housing research by scanning more than 2 millions of housing offers on different platforms such as leboncoin, pap, bienici, avendreàlouer... this tool is free and if you want to benefit from it, [click here](#)
- **Visale:** This rent guarantee service is offered by the state and based on specific criteria (a valid visa or residence permit for example). Here is a [tutorial](#).

Different types of housing

Student housing in a private residence or with private owners

Many private student residences are open to foreign students. You can also choose to rent your own room or flat from an individual or a real estate agency. You can search for individual or shared accommodation. Sharing housing can be very effective to reduce the cost of rent.

Our partner:

- [Studapart Network](#) requires your **emlyon** business school email address to log in to the housing platform, or your personal email address with the activation code **HOUSINGEM-LYON**. Students without a French guarantor can use the Studapart guarantor services (for an additional fee).

Master's students can also apply for housing at the **Cité Internationale Universitaire de Paris (CIUP)** residences (*non emlyon partner*). Located in the south of Paris, the CIUP houses over 6000 students and researchers in 40 different residences. Room rates vary according to comfort, age, and the length of the stay. Eligibility is based on nationality. Make sure to [apply early](#) due to high demand.

CROUS residences

The CROUS is a government service that provides food, housing, and subsidies for students in France. **French students are given priority in CROUS residences**. To apply for a room, you must prepare an «**international lodging**» (LEI) application and submit it between January 15 and May 31 before the start of the academic year.

For Paris, click [here](#) (information is in French).

Inclusive and social student housing

You may have access to **social student housing**, which have more affordable prices. Located near the Paris campus, the [Foyer de Reuilly](#) welcomes young professionals, job seekers, apprentices and students from all around the world (young women only). You can find more options for inclusive social housing for youth in Paris, such as intergenerational living, on the [city's website](#) (information is in French).

Student housing with a host family

Staying in a homestay with a host family is a great way to **practice your French, discover the local culture, and reduce your housing costs**. In most cases, this would be a private room in a house or flat. Contact [Atome Paris](#) or [Homestay in Paris](#) for more information (*non emlyon partners*).

Other useful websites to find accommodation (non emlyon business school partners)

- <https://housinganywhere.com/fr/>
- <https://www.adele.org/>
- <https://www.seloger.com/>
- <https://www.lokaviz.fr/>
- <https://www.locservice.fr/>
- <https://www.location-etudiant.fr/>
- <https://www.studylease.com/>
- <https://www.estudines.com/>
- <https://www.immojeune.com/>
- <https://www.appartager.com/>
- <https://www.lacartedescolocs.fr/>
- <https://whoomies.com/>

Signing the lease

What is a "bail"

A "bail" or "**contrat de location**" is a lease or rental agreement, which sets the conditions under which you have the right to occupy the unit. The following are among the provisions in the rental agreement:

- The monthly rent amount and fees
 - The amount of the security deposit (see below)
 - The length of the notice period before leaving
- You should be prepared to **pay the first month's rent and security deposit upon signing the rental agreement**.

Security Deposit

The security deposit is a sum that your landlord usually requires from you to cover any damage that may occur to the property during your stay. The amount is generally equal to a month's rent. The security deposit will be returned to you if you leave the unit in the same condition in which you found it when you moved in. If you do not pay your rent, make major damages to your accommodation, or if you leave without any notice, **the landlord has the right not to return your deposit**.

Check-in Inventory

Inventory reports are some of the most important documents related to your rented property. When you move out, any damage not originally listed in the inventory report will be attributed to you, and you will lose your deposit. Make sure to fill this report out thoroughly in order to increase your odds of receiving your security deposit.

A general guide of what to look for during the inventory is available on your student [Makersboard under the section "Housing" > "Check-in Inventory"](#)

If possible, **take a picture of everything that is missing, damaged, or incorrectly described in the inventory**.

Note that if you and your landlord go into a dispute over damages, hygiene or other matters, the inventory will be the most significant piece of evidence.

Housing Insurance

An « assurance habitation » is a **mandatory housing insurance policy** that includes losses occurring to your housing and its contents, in addition to liability insurance for accidents that may happen. You must subscribe to one before signing the lease and must present a certificate of a valid housing insurance for your future accommodation to the landlord when signing the lease. You are free to choose the insurance company for this policy.

Housing Benefits (CAF)

Once you have found housing, you may be eligible to **housing subsidies through the CAF**. The CAF is a French agency that provides subsidies to low-income individuals and families. You can access CAF subsidies even as an international student. Do an [online simulation](#) to see if you are eligible.

Before you start your application, please prepare:

- A valid email address
 - Your rental contract
 - The amount of your income for the last 2 years
 - An IBAN (French account)
 - The CAF "allocataire" number of your parents if necessary
 - Landlord contact details (owner, agency), rent amount, "SIRET" number if the landlord is a company
- Do your [Apply online](#) if you are eligible. A step by step tutorial is available via your student [Makersboard](#).



Health and Insurance

The Health Insurance System

For a stay of more than 90 days on the French territory it is mandatory to register to the CPAM through a dedicated [website](#). All international students are entitled to this coverage, and **registration is completely free**. Social security coverage is provided by the CPAM (Caisse Primaire d'Assurance Maladie) and partially covers your healthcare expenses.

If you are from the European Union, the EEE or Switzerland, you must obtain a European Health Insurance Card (EHIC) **before your arrival in France**.

If your stay is less than 90 days, then you must have international insurance coverage for your time in France.

In France, health costs are divided in three parts. The mandatory portion is reimbursed by the universal health insurance ("sécurité sociale"). The complementary portion is reimbursed by your "mutuelle" health insurance, if you have one. Finally, the fixed contribution is paid by almost all recipients.

Here is an example of the refund of a doctor's appointment:



Complementary health insurance

Complementary insurance plan called "mutuelle" is an additional health insurance that you can subscribe to in order to receive a better reimbursement of your medical expenses. There are several "mutuelle" companies in France such as [HEYME](#) or [LMDE](#). We recommend that you compare prices and guarantees before choosing one. This is not free and will require annual payment.

Declaring a general doctor

You can register with a general doctor to the CPAM. This will allow you to receive a better refund. This doctor will get to know the patient's medical history and manage your records. You will have to declare one on your ameli account.

The "Carte Vitale"

Once your registration to the CPAM is done, you will be attributed a unique, 13-digit identifier, and then you will be able to order your "Carte Vitale". This free card includes your health insurance number and provide access to health care and direct reimbursement.

Emergency numbers



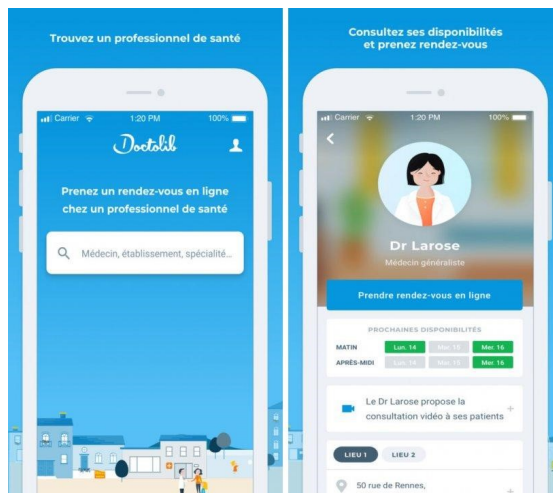
Numbers for more specialized services are available on [Makersboard](#) in the section « Health and Insurance ».

Doctolib

[Doctolib](#) is an online platform and mobile app that allows you to book an appointment online directly with the doctor of your choice. You can find general practitioner, specialists, and doctors who speak languages other than French.

In order to search for doctors by spoken language, you must first write the name of the city in French. It is best to search for the kind specialist you are searching for. If you leave it blank, it will search for a general practitioner as default.

Filter your search by clicking on "langues parlées" (spoken languages) and choose your language in the drop-down menu. This will update the list of doctors and show you the next available appointments.



International Insurance

emlyon business school provides international insurance coverage for all of its students. The international mobility insurance applies for academic purposes only. You can benefit from a wide range of guarantees valid almost worldwide during the whole academic year. Your contract does not apply to countries in a current state of foreign or civil war, or countries registered on the list of countries not recommended by the Ministry of Foreign Affairs.

Please note that **incoming exchange students are not covered by this insurance**.

The guarantees are detailed in documents available on [Makersboard](#) in the section « Health and Insurance »

- Hospitalisation
- Medical expenses (medical examination, medicine...)
- Repatriation
- Third Party Liability Abroad
- Loss of luggage etc.

In case of a health problem or an emergency, you must follow the advice on the assistance card in order to benefit from the reimbursement of your medical expenses.

Third Party Liability Insurance

This is a **mandatory insurance** that covers you in the event of damage or accidents that you may cause to third parties (people or property) in your academic or private life. This guaranty can be included in some insurance contracts: house insurance, bank contract, car insurance etc.

If you do not have such an insurance, covering you in France, note that **emlyon** offers you the possibility to contract one during your IAEL registration with our partner Mutuelle Saint-Christophe.

Life in France

Banks and loans

There are several banks in France. You can choose one with an agency or an all-online one. However, please note that not every bank accepts clients who stay less than a year. To create an account in a French bank, you must usually provide:

- Proof of identity: your passport or ID card for Europeans
- An enrolment certificate
- A proof of address

emlyon business school has several bank partners. They can be subject to change so you must always check your student [IAEL platform](#) section "tuition fees". You can also check other all online banks such as Monabanq, n26, Revolut, Orangebank, and Monese.

Loans

You may obtain a bank loan through **emlyon** financial partners only if you have a French fiscal resident guarantor for your loan. If not, we advise you to obtain a loan in your country of origin before your arrival or via Prodigy Finance if your program is eligible.

[Prodigy Finance](#) is an innovative platform that offers loans at preferential rates to international postgraduate students attending top universities. All **emlyon** MSc students are eligible.

Transportation

Metro-Bus-Tram

Public transport in the Paris region is organized by the [RATP](#). A student card called [ImagineR](#) is available for €38 for those under the age of 26. Regular price is €75. You can apply online after your arrival in France once you have completed your IAEL registration (see Campus Administration section).

Train

The national train network is operated by [SNCF](#). A [discount card](#) is available for youths (ages 12-27). There is also an [unlimited travel card](#) for a monthly fee (ages 16-27). [Ouigo](#) runs a low-cost high-speed rail service in France.

Bicycle & electric scooter

- The shared bicycle system in Paris is organized by [Vélib Métropole](#). Subscriptions are available for regular and electric bikes.
- Shared electric mopeds scooters are available through [Cityscoot](#) and [Lime](#) (Paris only).

Car rental

Short term car rentals are also available with [ShareNow](#) (Paris only). You must be at least 18 years old and have had your driver's license for over a year.

Carpooling and intercity buses

[Blablacar](#) is a famous French startup for carpooling. They also operate [intercity buses](#), which is an affordable way to travel around the country. Other main companies are [Flixbus](#), and [Eurolines](#).

Phone & Internet providers

ORANGE and its low-cost company SOSH	BOUYGUES TELECOM and its low-cost company B&YOU
SFR and its low-cost company RED by SFR	FREE : one of the newest telephone and Internet company in France.

Campus administration

Administration Registration (IAEL)

You will have to register to **emlyon** by completing an online file on the [IAEL platform](#). This is a **very important step**, as you need to complete this registration in order to receive your enrolment certificate (« certificat de scolarité »). You will need this document for many other procedures with the French administration.

Make sure to click on the « **validate your file** » button at the bottom right of the screen in order to complete your file !

Student Card

The team will order your card **once your IAEL file is complete**. You will not receive your card if your file is incomplete. The **emlyon** business school student card is an ISIC student card that is recognized in over 100 countries and offers a range of advantages and services. For more information, please check the [ISIC website](#)

This card can be charged:

- **For catering:**
 - > By credit card using the catering machines, physically available on campuses.
 - > By cash with the cashier.
 - > [Online](#)
- **For printing:**
 - > [Online](#)
- **For CROUS restaurants:**
 - > Via the website or the app [IZLY](#)

WIFI

There is a free WIFI network for **emlyon** students. Choose the **EMLEDOC** network and connect with your **emlyon** credentials (that you will receive before your arrival). Any IT issues? [Contact My Support](#).



Good deals

Culture

Paris has a rich cultural offering (museums, festivals, theatres, monuments, and parks), and it is renowned worldwide for its artistic scene and for its gastronomy. In addition, there are many cost effective opportunities for students to enjoy the city's many cultural offerings.

Interested in discovering Paris ?

1. [The tourism office website](#)
2. [Affordable cultural opportunities for students](#)
3. [Kiosque Jeunes \(reduced prices for theatre and other shows\)](#)



French cuisine and restaurants

Good to know: it is forbidden in France to drink alcohol or smoke before the age of 18.

You may want to go out and try the world-famous French cuisine, there are. Say no more, we have quite the amount of famous restaurants and bars in Paris! There are also countless places to find cuisine from all over the world.

Interesting websites :

1. [The fork](#)
2. [Guide Michelin](#)



World cuisine and neighborhoods

Paris is a global city, and this shows with regards to the wide variety of foods available. There are countless world cuisine restaurants, specialized markets, exotic grocery stores, street food shops, and bakeries of all kinds. More information [here](#).

There are also a [few neighbourhoods](#) where particular cultures are present: Turkey, Italy, Sub-Saharan Africa, China, South Korea and Japan, Vietnam and Southeast Asia, Middle East and North Africa. You can travel the world without leaving Paris!



Solidarity grocery stores

Solidarity grocery stores sell products at a reduced cost compared to regular grocery stores or supermarket. However, you need to meet certain conditions to be able to have access to these prices.

Each solidarity grocery store has its own condition of access, so you have to always check them before going to one. Most of the time, the condition of access are based on your financial situation. You can see a social worker who can help you with this and guide you to the right store.

Here is a solidarity store for students in Paris: **AGORAÉ**
It is located in the 13th district of Paris.

It is opened to all students, a place of share and exchange, a place of cooperation with the CROUS organization, a place of solidary & health information etc. You will find prices between 85% & 95% cheaper than in a regular supermarket.

You will need to fill in a file of application to get this service.



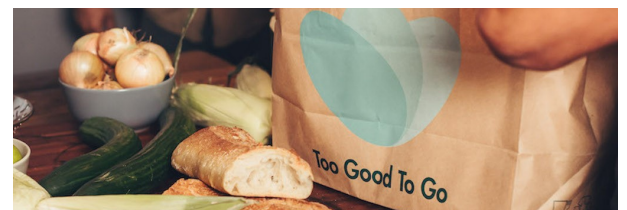
Anti waste apps

Every year 10 million tons of food is either lost or wasted in the country, costing the French 16 billion euros per year.

Fighting against food waste is thus a major challenge and it is clear that we can all make a difference in the way we shop and eat.

Here is a shortlist of anti-food-waste apps :

1. [Too Good to Go](#)
2. [Phenix](#)
3. [Zero Gaspi](#)



Paris and its "marchés"

If you want to eat fresh and local at reasonable prices, then say no more and discover the local Parisian markets. In French we say "marché." You will find local food, drinks, flowers but also some specialized markets for books for example! It is also a good way to discover the city and the locals.

Click [here](#) to find your local "marché."



Your main contacts

Student Services Center

Welcome Desk

- welcomedesk@em-lyon.com

International Student Support

Immigration, housing, health and insurance, and life in France

- Paris campus: internationaloffice75@em-lyon.com
- Ecully campus: internationaloffice@em-lyon.com
- Saint-Etienne campus : internationaloffice42@em-lyon.com

Student Support team

Administrative registration, student card, diplomas

- Paris campus: iael75@em-lyon.com
- Ecully campus: iael@em-lyon.com
- Saint-Etienne campus : iael42@em-lyon.com

Certificates, transcripts

certificateonline@em-lyon.com

Financial Support

Erasmus +, OFAJ mobility grants **for BBA**

Fanny MINSSIEUX minssieux@em-lyon.com

EIFFEL grant **for BBA**

Fanny MINSSIEUX minssieux@em-lyon.com

Need-based grants (CROUS, Emergency funds, foundation emlyon)

Ella HERBAUT: herbaut@em-lyon.com

Academic Exchanges

Incoming academic exchanges

incoming.globalbba@em-lyon.com

Outgoing academic exchanges

outgoing.globalbba@em-lyon.com

Shanghai Mobility

Rona GUO guo@em-lyon.com

The IT Helpdesk

<https://mysupport.em-lyon.com/>

Wellness center

Nurse: infirmierie@em-lyon.com

Psychologist: psychologue@em-lyon.com

